

YOU'RE INVITED...

To Our Open House Event

Thursday, October 24th from 5:30PM-7:30PM
Join us to learn more about our aesthetic services!
SPACE IS LIMITED—RSVP TODAY!
(908) 979-0050

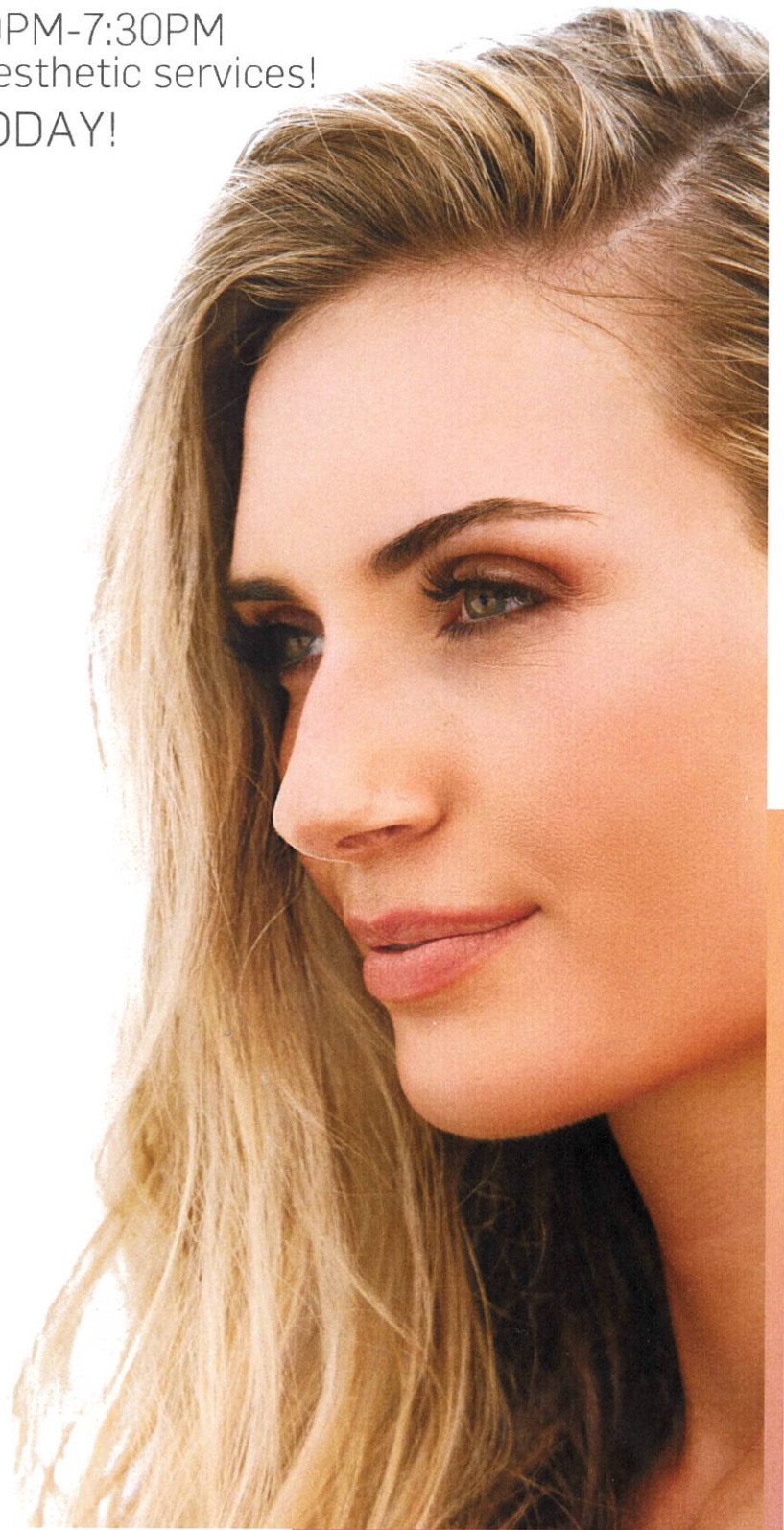
Profile *ENVI*[™]

Get the profile
that everyone will

ENVY

The ProfileEnvi treatment takes facial revitalization to the next level. Permanently eliminate stubborn fat under your chin with WarmSculpting[™] Profile treatments with SculpSure[®] body contouring, then reduce facial wrinkles and tighten* your skin with TempSure Envi[™] treatments.

The result? A slimmer, more defined-looking profile that everyone will envy.



Hackettstown Medical PC

5 Hastings Square

Hackettstown, NJ 07840

Ph: (908) 979-0050 | www.hackettstownmedicalpcpaesthetics.com

*Through soft tissue coagulation. The SculpSure device is a non-invasive laser body contouring system, designed to permanently eliminate fat cells through non-invasive lipolysis of the abdomen, love handles (flanks), back, inner and outer thighs, and under the chin (submental). Individual results may vary and are not guaranteed. WarmSculpting treatments are not intended for weight loss results or for people who are obese. Possible effects may include: temporary tenderness, swelling, or tissue firmness in the treatment area. Use of medical procedures and all patients are suitable for the treatment. Please consult with your physician about the risks and benefits of the procedure and do not use WarmSculpting or TempSure Envi near your eyes. Made for illustrative purposes only and not an actual comparison of the product. ©2019 Hologic, Inc. All rights reserved. Cynosure and SculpSure are registered trademarks of Cynosure, LLC. WarmSculpting, TempSure Envi and ProfileEnvi are trademarks of Cynosure, LLC. Hologic and its exclusive rights to photography, use of photography without a prior permission although prohibited. 02/19/19-050